

# Volunteering in Alberta

## How many? How much?

Approximately two in five residents of Alberta (39% or 913,000 people) volunteered through a charitable or nonprofit organization, according to the 2000 National Survey of Giving, Volunteering and Participating<sup>1</sup> This is a decrease from 40% in 1997.

Alberta volunteers also contributed less time, on average, in 2000, giving 139 hours of their time, a decrease of of about five percent from the 1997 average of 146 hours. This is the only such decrease in the country.

In total, Albertans volunteered 127.0 million hours in 2000, or the equivalent of over 66,000 full-time jobs. This is a slight decrease since 1997, when they volunteered 128.3 million hours.

## Much comes from the few

Almost one half (47%\*) of all volunteer hours in Alberta were contributed by the 10% of volunteers who gave 356 hours or more of their time. An additional 24%\* of volunteer hours were contributed by the 15% of volunteers who gave between 160 and 355 hours during the year.

Combined, these two groups accounted for 25% of volunteers, but 72%<sup>2</sup> of all volunteer hours.

## What volunteers do

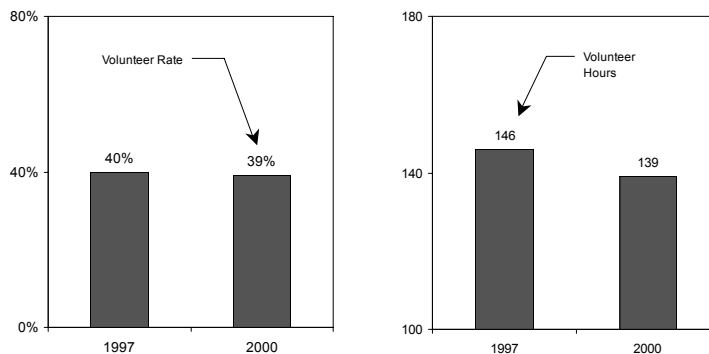
While Alberta's volunteers engaged in a wide range of voluntary activities, the most common were helping to organize activities (58% of volunteers), canvassing, campaigning, or fund-raising (44%), and serving as a member of a board or committee (39%). This pattern is broadly similar to most other provinces.

<sup>1</sup> NSGVP estimates are based on reports of charitable giving and volunteering over a one-year period by Canadians aged 15 and older.

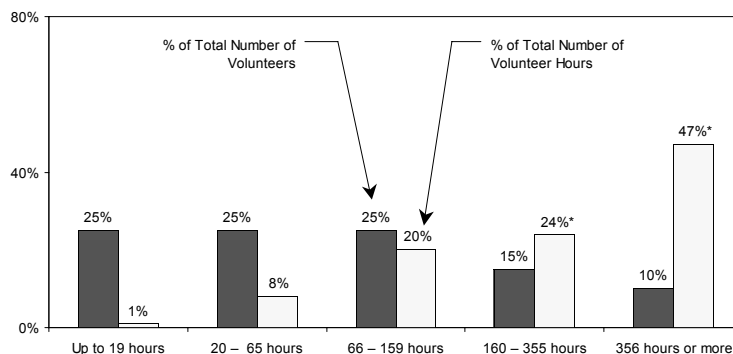
<sup>2</sup> This figure does not agree with a sum calculated from the corresponding chart due to rounding of the components presented in the chart.

\* Sample size limitations affect the reliability of this estimate.

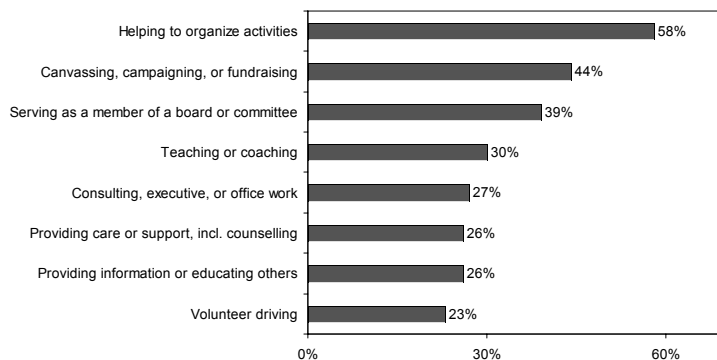
Percentage of Population Volunteering and Average Annual Volunteer Hours



Percentage of Volunteers and Percentage of Total Volunteer Hours by Annual Hours Volunteered



Percentage of Volunteers Engaging in Each Type of Volunteer Activity

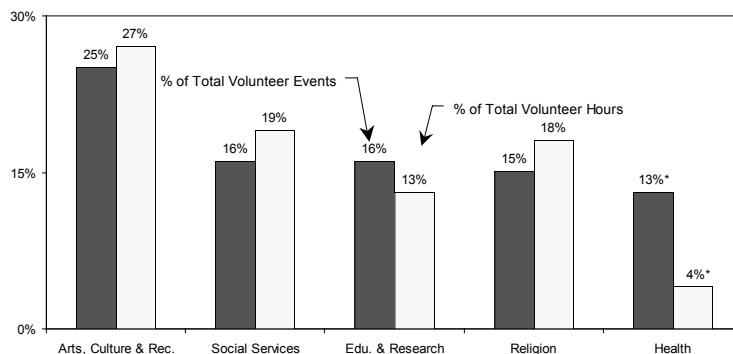


### Where they volunteer

While volunteers contributed time to many types of organizations, most volunteering occurred in organizations devoted to:

- Arts, Culture, and Recreation (25% of volunteer events<sup>3</sup> and 27% of volunteer hours),
- Social Services (16% of events and 19% of hours),
- Education and Research (16% events and 13% hours),
- Religion (15% and 18%), and
- Health (13%\* and 4%\*).

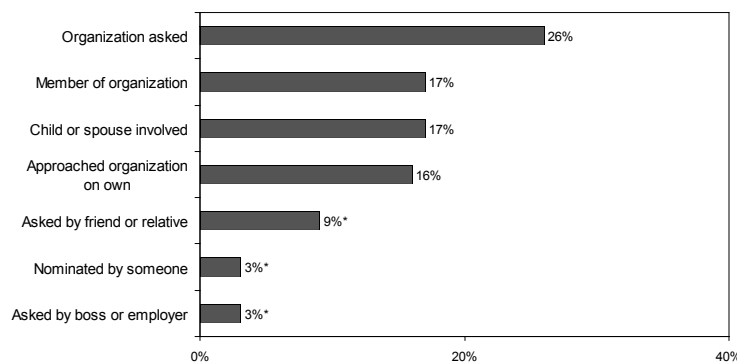
Percentage of Volunteer Events and Volunteer Hours by Type of Organization



### How volunteers get involved

There are many ways to become a volunteer, but by far the most common way in Alberta, as in the rest of Canada, was to be asked by someone in the organization (26%). About two thirds as many volunteers became involved because they were members of the organization (17%), because their child or spouse was involved (17%), or because they approached the organization on their own (16%).

Percentage of Volunteer Events by Method of Becoming Involved

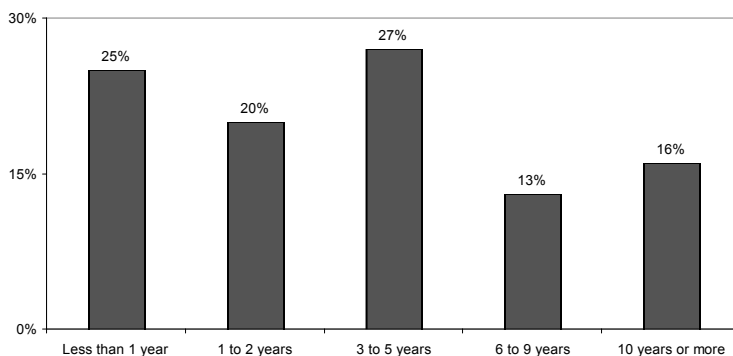


Alberta volunteers were more likely than volunteers in any other province to volunteer because their child or spouse was involved.

### How long volunteers have been involved

Compared to the rest of the country, more volunteers in Alberta had volunteered for five years or less. Seventy-one percent<sup>4</sup> of Alberta volunteers had been involved with an organization for five years or less, compared to 67% of Canadian volunteers.

Percentage of Volunteers by Length of Involvement



The percentage of Alberta volunteers who have devoted three to five years to an organization is the highest such percentage in Canada.

<sup>3</sup> A “volunteer event” is defined as all voluntary activities for a particular organization, regardless of whether those activities took the form of a single episode of volunteering or multiple episodes of volunteering over time.

<sup>4</sup> This figure does not agree with the sum calculated from the corresponding chart due to rounding of the components presented in the chart.

Note. Percentages do not add up to 100% due to rounding

For more information on the 1997 and 2000 National Survey for Giving, Volunteering and Participating, including full text of the highlight report, *Caring Canadians*, *Involved Canadians*, please visit [www.givingandvolunteering.ca](http://www.givingandvolunteering.ca).

We would like to acknowledge the support of our funder, Human Resources Development Canada (HRDC), for the production of this fact sheet.

Canadian Centre for Philanthropy Research Program  
425 University Ave., Suite 700  
Toronto, ON M5G 1T6  
tel. 416.597.2293  
fax. 416.597.2294

© 2003, Canadian Centre for Philanthropy

