

# Who are

# Newfoundland and Labrador's Volunteers?

## Personal and economic characteristics

Thirty-one percent of the residents of Newfoundland and Labrador (138,000 people) volunteered an average of 206 hours each, according to the 2000 National Survey of Giving, Volunteering and Participating.<sup>1</sup> Whether individuals volunteer and how many hours they contribute vary with a number of personal and economic characteristics. This fact sheet explores the relationship between volunteering and age, education level, sex, labour force status, and household size.

### Age

Residents of Newfoundland and Labrador aged 15 to 29 were the most likely to volunteer (37% volunteered in 2000), followed by those aged 30 to 44 (35%). Those aged 60 and older were the least likely to volunteer (19%\*).

Although comparatively few residents of Newfoundland and Labrador aged 60 and older volunteered, this group contributed the most hours on average (289\*). Volunteers aged 45 to 59 contributed the fewest hours on average (172).

Volunteers aged 60 and older also accounted for a disproportionately large percentage of total volunteer hours. Although they made up for only 11% of volunteers, they contributed 15%\* of all volunteer hours.

### Education

Volunteering in Newfoundland and Labrador increased with the level of formal education attained. Almost half (49%\*) of Newfoundland and Labrador residents with a university degree volunteered. In contrast, less than one quarter (23%) of those with a high school diploma or less volunteered.

Volunteers with a university degree contributed the most hours on average (273), followed by those with a high school diploma or less (228).

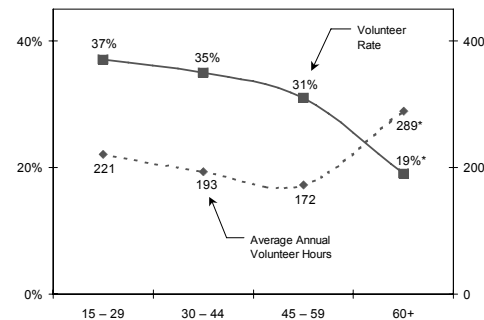
Volunteers with a university degree also accounted for a disproportionately large percentage of the total hours volunteered. They made up 14% of volunteers, but accounted for 19%\* of all volunteer hours.

<sup>1</sup> NSGVP estimates are based on reports of charitable giving and volunteering over a one-year period by Canadians aged 15 and older.

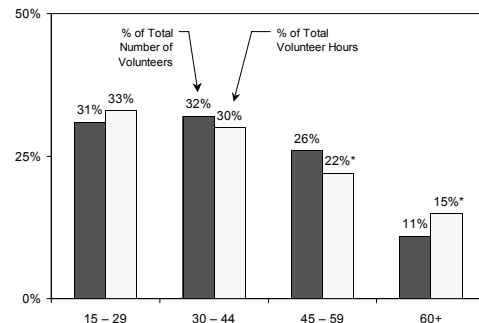
<sup>2</sup> This category includes the completion of a trade certificate or diploma, graduation from a community college or CEGEP, and some university.

\* Sample size limitations affect the reliability of this estimate.

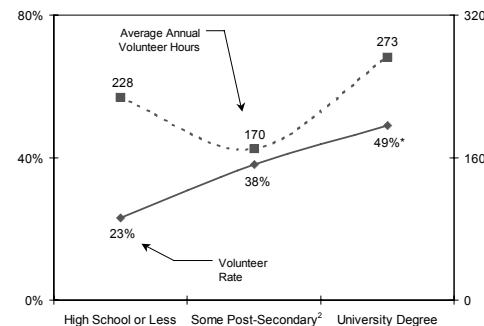
Volunteer Rate and Average Annual Volunteer Hours by Age



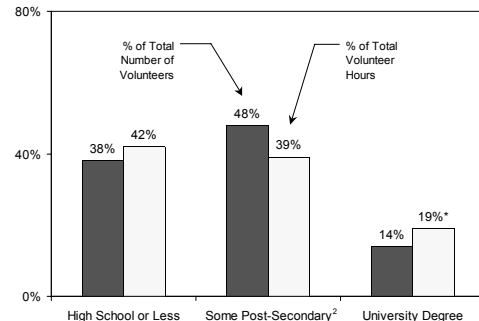
Percentage of Volunteers and Percentage of Total Volunteer Hours by Age



Volunteer Rate and Average Annual Volunteer Hours by Education



Percentage of Volunteers and Percentage of Total Volunteer Hours by Education



**Sex**

Women in Newfoundland and Labrador were more likely than men to volunteer (36% of women volunteered, compared to 27% of men) and accounted for a higher percentage of the total hours volunteered (57%\* versus 43%). However, men who volunteered contributed more hours on average than did women (215 versus 201).

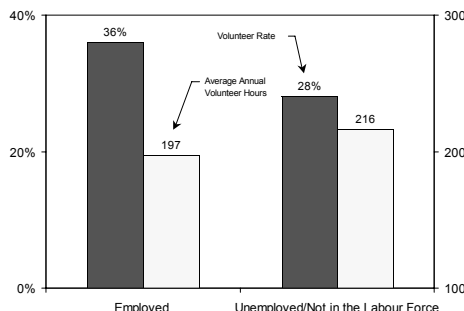
**Volunteer Rate and Percentage of Total Volunteer Hours by Sex**



**Labour force status**

Newfoundland and Labrador residents who were employed were more likely to volunteer (36%) than were those who were unemployed or not in the labour force (28%).

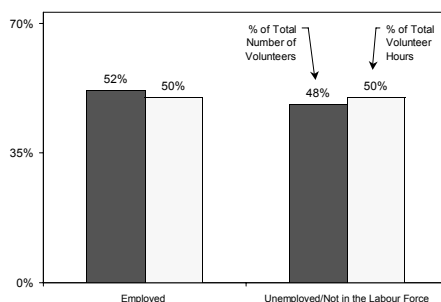
**Volunteer Rate and Average Annual Volunteer Hours by Labour Force Status**



However, volunteers who were unemployed or not in the labour force contributed more hours on average (216) than did those who were employed (197).

Volunteers who were unemployed or not in the labour force also accounted for a disproportionately large percentage of the total hours volunteered. Although the disparity is not large, this group made up 48% of volunteers, but contributed 50% of total volunteer hours.

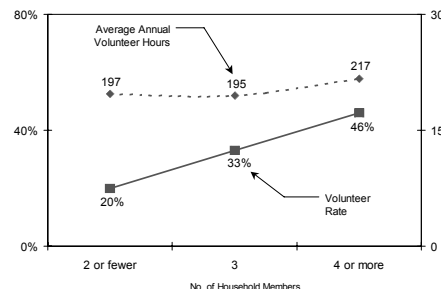
**Percentage of Volunteers and Percentage of Total Volunteer Hours by Labour Force Status**



**Household size**

Residents of Newfoundland and Labrador living in larger households were more likely to volunteer. Just under half (46%) of those living in households with four or more members volunteered, while only one fifth (20%) of those in households with fewer than three members did so.

**Volunteer Rate and Average Annual Volunteer Hours by Number of Household Members**



Volunteers living in households with four or more members also contributed the most hours on average (217). Those living in three-member households contributed the fewest hours (195).

For more information on the 1997 and 2000 National Survey for Giving, Volunteering and Participating, including full text of the highlight report, *Caring Canadians*, *Involved Canadians*, please visit [www.givingandvolunteering.ca](http://www.givingandvolunteering.ca).

We would like to acknowledge the support of our funder, Human Resources Development Canada (HRDC), for the production of this fact sheet.

Canadian Centre for Philanthropy Research Program  
425 University Ave., Suite 700  
Toronto, ON M5G 1T6  
tel. 416.597.2293  
fax. 416.597.2294

© 2003, Canadian Centre for Philanthropy

