

# The Giving and Volunteering of New Canadians

## Fact Sheet #12




### The Role of New Canadians

Canadians provide support to individuals and communities in many forms. Two types of support, donating money and volunteering time to organizations, depend in part on the period of immigration for new Canadians, according to the National Survey of Giving, Volunteering and Participating (NSGVP).<sup>1</sup> The survey asked people to identify their country of birth and, where applicable, period of immigration.<sup>2</sup> Almost one in five Canadians were born outside of Canada.

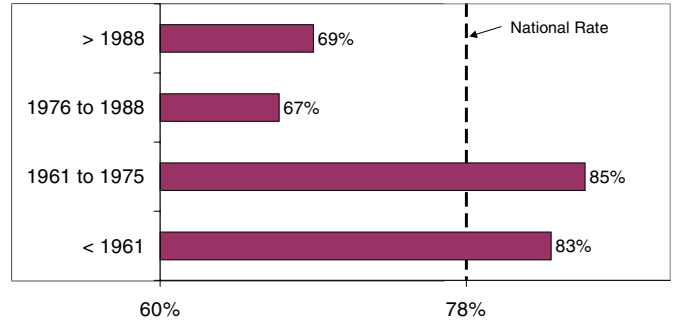
Note that these NSGVP data should not be used to draw conclusions about ethnic or cultural differences in generosity. This would require a deeper understanding of other factors such as age, income and education. For example, almost 45% of immigrants arriving in Canada from 1961 to 1975 report household incomes exceeding \$60,000. This level of income is associated with a higher propensity to give.

#### Giving and Immigration<sup>3</sup>

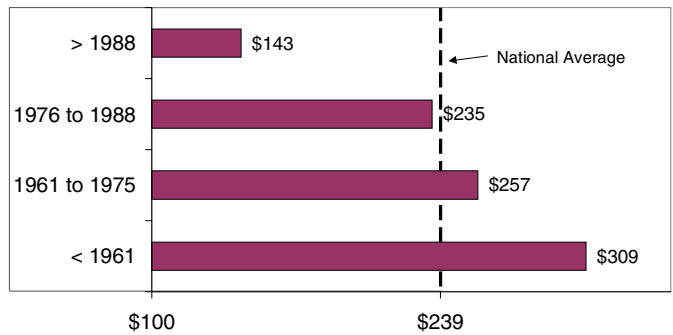
Almost 80% of Canadians made a direct financial contribution averaging \$239 to charitable organizations. Survey data show that:

-  Established immigrants reported donor rates higher than the national average and contributions increased steadily with length of stay in Canada.
-  Immigrants on average give more to religious organizations than do Canadians as a whole, with the exception of those who arrived in Canada between 1976 and 1988, who tend to be less religious.
-  The donor rate increased with the length of time respondents had lived in their community, for all Canadians regardless of country of birth.

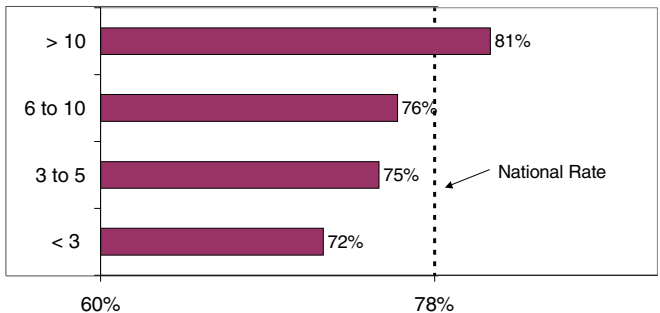
Donor Rate by Period of Immigration



Average Annual Donation by Period of Immigration



Donor Rate by Years Residing in Community



1. NSGVP findings are based on charitable giving and volunteering for a one-year period ending October 31, 1997 by Canadians aged 15 years and older.

2. Based on year of arrival in Canada, four equal groups (quartiles) of immigrants were created: those who arrived before 1961; those who arrived between 1961 and 1975; those who arrived between 1976 and 1988; and those who arrived after 1988. Established immigrants are those who arrived before 1976; newer immigrants are those who arrived in 1976 or after.

3. For more information on this subject please see: Mata, Fernando, McRae, Don. (April, 2000). *Charitable giving among the foreign-born in Canada*. Ottawa: Department of Canadian Heritage.

**Fact Sheet #12 is the last in a series of fact sheets based on national analyses of the NSGVP data. Please visit NSGVP On-Line for fact sheets for British Columbia, Alberta, and Ontario.**

## Volunteering and Immigration

More than 31% of Canadians volunteered an average of 149 hours to groups and organizations. Survey data show that:

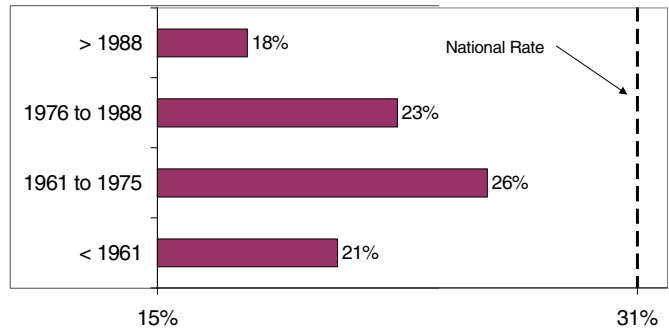
- ✦ Immigrants have a lower propensity to volunteer regardless of period of arrival.
- ✦ Immigrant volunteers arriving in Canada from 1976 to 1988 contributed an above average number of hours to non-religious organizations.
- ✦ The volunteer rate increased with the length of time respondents had lived in their community, for all Canadians regardless of country of birth.

## Motivations and Barriers

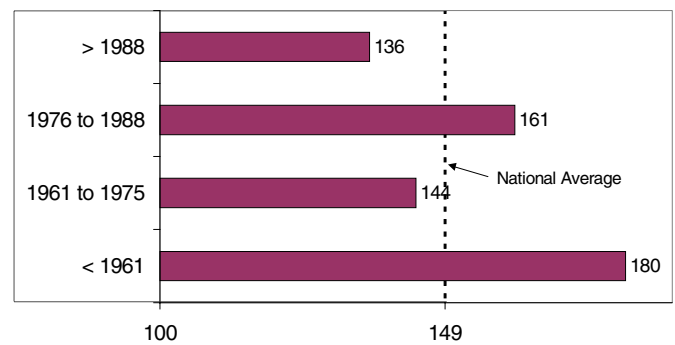
Motives for, and barriers to, charitable giving and volunteering varied for immigrants by period of arrival in Canada.

- ✦ Almost one half of immigrants indicated religious obligations or beliefs as a motive for giving compared to 34% of all donors.
- ✦ More newer immigrants, almost twice the national average, reported not knowing where to make a contribution as a reason for not giving more or at all.
- ✦ About 30% of newer immigrants indicated improving their job opportunities as a motive for volunteering.
- ✦ Newer immigrants, at more than twice the national average, reported not knowing how to become involved as a reason for not volunteering more or at all.

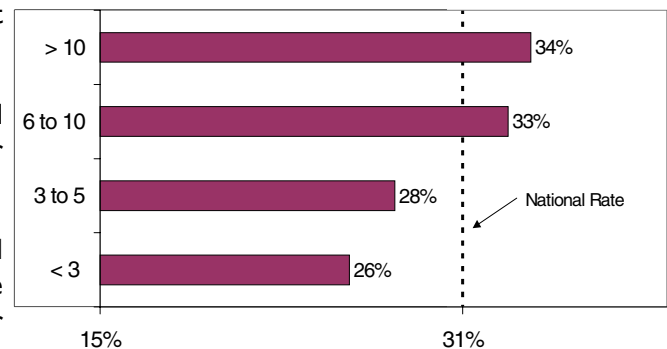
Volunteer Rate by Period of Immigration



Average Volunteer Hours by Period of Immigration



Volunteer Rate by Years Residing in Community



Canadian Centre for Philanthropy™  
Le Centre canadien de philanthropie<sup>MC</sup>



VOLUNTEER  
BÉNÉVOLES  
C A N A D A

We would like to acknowledge the support provided by Community Foundations of Canada for the production of these fact sheets.

Published July 2000 © Canadian Centre for Philanthropy

More information on the results of the NSGVP, including the full text of the highlight report *Caring Canadians, Involved Canadians*, is available online at our Web site: [www.nsgvp.org](http://www.nsgvp.org)

Or contact us:

Research Coordinator  
Canadian Centre for Philanthropy  
425 University Avenue, Suite 700  
Toronto Ontario, M5G 1T6  
Phone: 416-597-2293 ext. 238 Fax: 416-597-2294  
e-mail: [ccpresearch@ccp.ca](mailto:ccpresearch@ccp.ca)

Fact Sheet #12 written by Larry McKeown,  
Research Associate, Canadian Centre for Philanthropy.